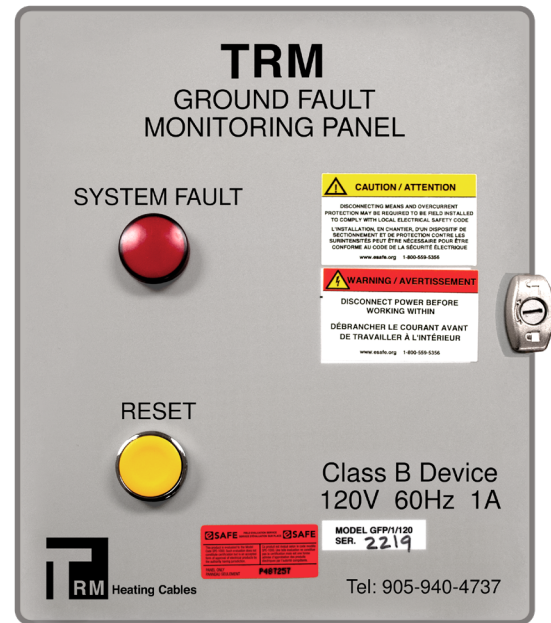




KEY FEATURES

- ✓ COST EFFECTIVE GROUND FAULT PROTECTION
 - MONITOR UP TO A 1000 AMPS
- ✓ ADJUSTABLE GFEP TRIP LEVELS
 - 0.25A - 0.75A (STANDARD UNITS)
 - 0.01A - 30A (CUSTOM UNITS)
- ✓ CARRIES ESA APPROVALS



DESCRIPTION

TRM's GFI Relay Panels offer ground fault monitoring and protection for virtually any heat tracing applications. TRM GFI Relay Panels monitor single or three phase circuits at any voltage. These panels provide a cost-effective solution of ground fault monitoring for large heat tracing loads, which eliminates the need for expensive GFEP Breakers.

- Cost effective ground fault protection for any size heat tracing circuits/loads.
- Standard units include a built in GFEP module that can be adjusted from a .25-.75A trip level.
- Custom units can be built with a trip level anywhere from .01 A to 30A depending on what the application is that you are utilizing the panel for.
- Standard units come with a 2" current transformer, this can be upgraded to a 5" current transformer if required.
- Can monitor up to a 1000A load.

Class B device - 120V, 60 Hz, 1 Amp Draw

NEMA 1 rated enclosure: 8" (W) x 10" (L) x 6" (D)

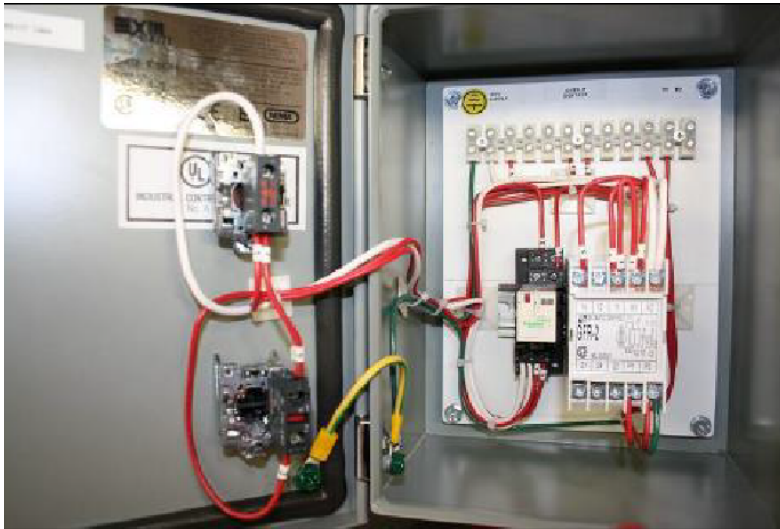
- Comes with door latch (optional key lock feature)
- Comes with red indicator light to display ground fault condition
- Comes with yellow reset push button

Compatible Cable Types:

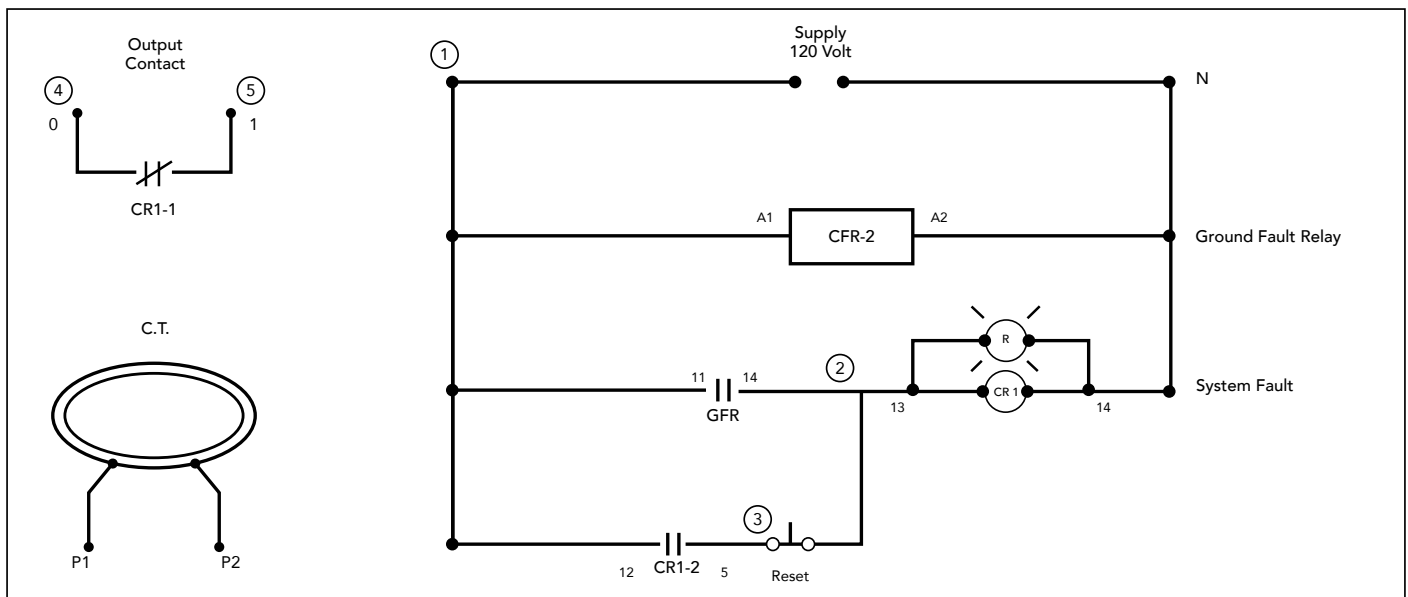
- Mineral Insulated (MI)
- Self Regulating (SR)
- Polymeric Series Resistant



WIRING OF GFI RELAY UNIT



PANEL WIRING DIAGRAM



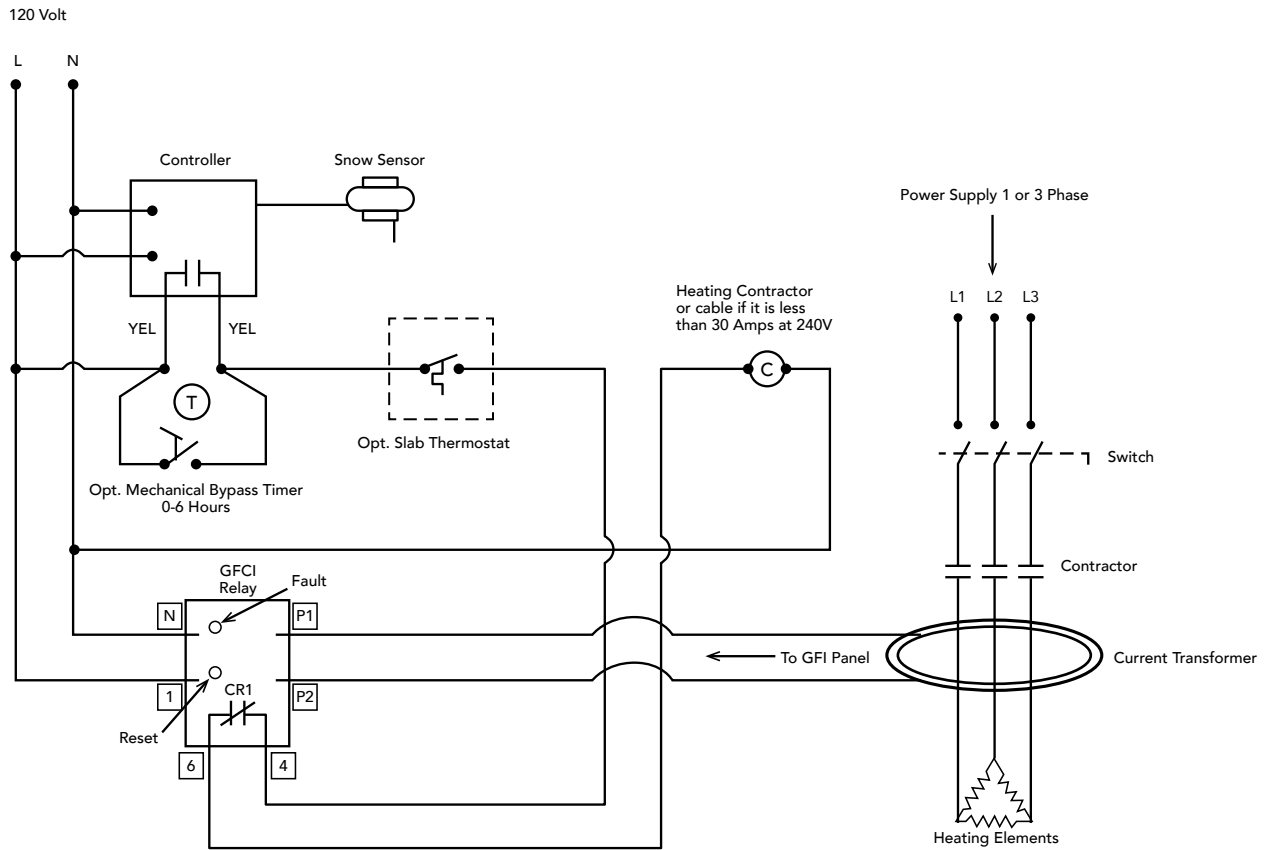
IMPORTANT NOTE

Heat tracing system switching components are not included in this panel.

- Panel DOES NOT include Breakers
- Panel DOES NOT include Contactors

Custom Panels with built in breakers, contactors or other custom components are available upon request to TRM.

TYPICAL SYSTEM WIRING DIAGRAM



IMPORTANT NOTE

1. DO NOT run ground/bond through C.T.
2. If a neutral is used in heating cable connections, it MUST be run through the C.T.

Please contact TRM Heating Cables if you require wiring or system installation assistance.

WARRANTY

We believe in the superior quality of our TRM GFI Relay products. Our standard warranty is 2 years from the date of purchase. Contact us regarding extended warranty terms and conditions.

TRM is an industry leading, Canadian-owned, designer, and manufacturer of premium heating cable and systems in the commercial, industrial, and residential sectors.

GET IN TOUCH

905 940 4737
 info@trmheatingcables.com
www.trmheatingcables.com

